



THE VORARLBERG CHILDREN'S VILLAGE

www.vorarlberger-kinderdorf.at



Vorarlberger
Kinderdorf
Wir tragen Sorge.

The Vorarlberg Children's Village (Vorarlberger Kinderdorf) supports families where the welfare of the child is at risk or is compromised. Approximately 2,300 children, young people and their families are provided with the opportunity of a sensitive and supporting environment, and receive whatever help they need.

As the largest facility of the child and youth services in Vorarlberg, the Vorarlberg Children's Village campaigns with all its energy for child protection and children's rights, for the support and empowerment of disadvantaged families and for a child friendly and child just environment. Key to our work is the assistance we receive from the community: the Kronhalde Children's Village and our own innovative projects are in large part funded by donations.

WHAT BECOMES
OF OUR
CHILDREN IS
EVERYBODY'S
CONCERN



VORARLBERGER KINDERDORF

Kronhaldenweg 2, 6900 Bregenz

T +43 5574 4992-0, F +43 5574 4992-48

kinderdorf@voki.at



**Vorarlberger
Kinderdorf**
Wir tragen Sorge.



FAMILIENIMPULSE

www.kinderdorf.cc/familienimpulse



Vorarlberger
Kinderdorf
Wir tragen Sorge.

HELPING PEOPLE TO HELP THEMSELVES

Every little help goes a very long way: the FAMILIENIMPULSE programme is aimed at the general population and, on the premise that prevention is better than cure, offers families which do not require any professional help but nevertheless would like some extra support in times of strain. Community activities with children provided through volunteers and (intercultural) family friendships lead to new relationships and networks, and relieve the stresses on families in their day-to-day lives.

- FAMILIENIMPULSE – voluntary work with children
- Play bus – bringing life to playgrounds and residential areas
- ‘Valuable children’ – a series of lectures on parenting skills and awareness raising

All these programmes are open to the public, are free of charge and are in large part financed by the Land Vorarlberg.

FAMILIENIMPULSE

Kronhaldenweg 2, 6900 Bregenz
T +43 5574 4992-54, F +43 5574 4992-48
familienempowerment@voki.at



Vorarlberger
Kinderdorf
Wir tragen Sorge.



NETZWERK FAMILIE

www.kinderdorf.cc/netzwerk-familie
www.netzwerk-familie.at



Vorarlberger
Kinderdorf
Wir tragen Sorge.

The name is the programme: Family Network. In order to strengthen young families, NETZWERK FAMILIE blends the health and social fields. Families-to-be and families with babies and small children can in stressful life situations get help which is both timely and unbureaucratic.

Life with a young child can present parents with special challenges. NETZWERK FAMILIE seeks to come to the aid of young parents by organising suitable assistance and looking after their interests on a long-term basis.

NETZWERK FAMILIE is a programme of the Vorarlberg Children's Village, aks gesundheit, and the Vorarlberg Association of Paediatricians. The project is financed by the Land Vorarlberg.

THE LAUGHTER
OF CHILDREN IS
THE MUSIC OF
THE FUTURE

NETZWERK FAMILIE

Rathausplatz 4, 6850 Dornbirn

T +43 5572 200262

info@netzwerk-familie.at



Vorarlberger
Kinderdorf
Wir tragen Sorge.



AMBULANTER FAMILIENDIENST

www.kinderdorf.cc/ambulanter-familiendienst



Vorarlberger
Kinderdorf
Wir tragen Sorge.

The staff of the AMBULANTER FAMILIENDIENST offer professional back up for families under a lot of strain and pressure. As always, it is the welfare of the child that is at the heart of this programme, which is accessed via the official local community services within a framework of providing support for those raising children and young people.

Integral to the on-going work with families are customised advisory and support services, as well as practical assistance on a day-to-day basis, the organisation of family group conferences, coaching parenting skills or training basic household management. The focus is as much on the needs of the children themselves as on the potential and capabilities of the family as a whole. Every attention is paid to the resources and possibilities of those concerned, and of course their willingness to take steps to enhance their lives. Social pedagogy and therapies make up for existing deficiencies and empower children in their development.

THE SHORTEST
AND MOST
OBVIOUS PATH
IS NOT ALWAYS
THE ONE THAT
TAKES US
FORWARD

AMBULANTER FAMILIENDIENST

Kronhaldenweg 2, 6900 Bregenz

T +43 5574 4992-51, F +43 5574 4992-55

afd@voki.at



Vorarlberger
Kinderdorf

Wir tragen Sorge.



AUFFANGGRUPPE

www.kinderdorf.cc/auffanggruppe



Vorarlberger
Kinderdorf
Wir tragen Sorge.

In an acute family crisis the most important thing is a place providing shelter and security, and this is the task of the AUFFANGGRUPPE. This reception group offers immediate aid for children up to 14 years old, as well as for mothers who require some temporary relief from the challenges of everyday life.

The AUFFANGGRUPPE makes it possible for children to have a 'time-out'. Professionals work together with the children and their parents to find new ways of dealing with their lives and the challenges facing them, as well as new perspectives on their situation. In the case of children up to five years of age private 'crisis families' stand by to help. There is close cooperation with other specialist services, in particular with the AMBULANTER FAMILIENDIENST.

**A CRISIS CAN
BRING TO LIGHT
UNDREAMT-OF
RESOURCES**

AUFFANGGRUPPE

Kronhaldenweg 4, 6900 Bregenz
T +43 5574 4992-40, F +43 5574 4992-48
afg@voki.at



**Vorarlberger
Kinderdorf**
Wir tragen Sorge.



PAEDAKOOP

RESIDENTIAL GROUPS

LIFEWORLD ORIENTED SUPPORT

SCHOOL (maintaining body: Werk der Frohbotschaft Batschuns)

www.kinderdorf.cc/paedakoop · www.paedakoop.at



Vorarlberger
Kinderdorf
Wir tragen Sorge.

Residential groups, lifeworld oriented support, and the Paedakoop School are dedicated to children and young people of school age who are at risk either in their educational or personal development. Help is also given to parents and guardians facing major problems bringing up their children.

This support and relief makes it possible to find constructive solutions. In a sheltered environment children and young people have the opportunity to recognise their strengths, to discover their own abilities and try out something new. The primary aim is to reintegrate children into their families and schools.

**YOU'LL NEVER
WALK ALONE**

PAEDAKOOP

Wohngruppen, Lebensweltorientierte Betreuung:

Jagdbergstraße 44, 6824 Schlins

T +43 5524 8315-0, F +43 5524 8315-116

paedakoop@voki.at

Schule: Jagdbergstraße 45, 6824 Schlins

T +43 5524 8315-451, F +43 5524 8315-452

direktion@paedakoop.snv.at



**Vorarlberger
Kinderdorf**
Wir tragen Sorge.



PFLEGEKINDERDIENST

www.kinderdorf.cc/pflegekinderdienst



Vorarlberger
Kinderdorf
Wir tragen Sorge.

On behalf of the children and youth services, the PFLEGEKINDERDIENST looks for loving and caring foster parents and anchor families who are ready and willing to commit themselves to looking after disadvantaged children.

Foster families give children a new home and the chance to better find their own way in the world. The integration of a child into a foster family is a sensitive process requiring a great deal of empathy and patience on the part of the foster parents. A successful integration, however, enriches everybody.

In addition, the PFLEGEKINDERDIENST seeks and supports anchor families. These are families that can provide a renewed sense of security to socially disadvantaged children between the ages of 6 and 12 who for whatever reason are unable to live with their biological parents and who have increased fostering and care requirements.

CHILDREN
NEED ROOTS
TO GROW
AND WINGS
TO FLY

PFLEGEKINDERDIENST

Ringstraße 15, 6830 Rankweil

T +43 5522 82253-0, F +43 5522 82253-7

pkd@voki.at



Vorarlberger
Kinderdorf
Wir tragen Sorge.



KINDERDORF KRONHALDE

www.kinderdorf.cc/kinderdorf-kronhalde



Vorarlberger
Kinderdorf
Wir tragen Sorge.

In the KINDERDORF KRONHALDE adults live together with children and young people who cannot live in their own homes. In remedial families and family residential groups a safe and secure home is organised as a complement to the family roots. A place with a normal daily routine where children can experience themselves as personalities, where they are encouraged and inspired. A place where children can develop new insights into their own world and receive individual therapeutic support.

The children's village families offer a medium to long-term living space for up to five children. The family residential groups offer a temporary home for school-age children who in the medium-term will return to their parents live in the family residential groups. The children's village takes great care to cooperate very closely with parents, who are always treated with the greatest of respect. Foremost is the endeavour to provide the children and young people with future perspectives. Specialists coordinate continuity planning for the children themselves, a partnership with their parents and cooperation with the child and youth services.

**A WHOLE
VILLAGE IS
NEEDED SO
THAT
CHILDREN
CAN GROW
HEALTHILY
IN BODY
AND SOUL**

KINDERDORF KRONHALDE

Kronhaldenweg 2, 6900 Bregenz

T +43 5574 4992-73, F +43 5574 4992-48

dorf@voki.at



**Vorarlberger
Kinderdorf**
Wir tragen Sorge.



EHEMALIGENBETREUUNG

www.kinderdorf.cc/ehemaligenbetreuung



Vorarlberger
Kinderdorf
Wir tragen Sorge.

The KINDERDORF KRONHALDE provides a support service for all former residents. It is a voluntary drop-in centre and contact point for anybody who was once a children's village child. Here old relationships are nurtured in a trusting atmosphere where support in maintaining a household, life skills and jobs are all to be found.

Three members of staff are on hand to assist with the different wishes and concerns of the former residents. Especial attention is paid to making contact with and continuing to care for the young people as they transition from life in the children's village to independent and full participation in society as a whole.

And so our former residents, even after they have left us and are well into adulthood, still have a home, a place where at any time they can receive understanding, concrete support and companionship.

HOME IS
WHERE
PEOPLE
UNDERSTAND
ME

KINDERDORF KRONHALDE

Kronhaldenweg 2, 6900 Bregenz

T +43 5574 4992-22, F +43 5574 4992-48

eb@voki.at



Vorarlberger
Kinderdorf
Wir tragen Sorge.



COMMUNICATIONS & FUNDRAISING

www.kinderdorf.cc/so-helfen-sie



Vorarlberger
Kinderdorf
Wir tragen Sorge.

The Vorarlberg Children's Village is a place where disadvantaged children can find support and hope. In this valuable work your help as a FRIEND or GODPARENT counts so that children can find new faith in life, in their dreams and, above all, in themselves. You can be one of our FRIENDS for as little as 10 cents a day. And for a euro a day you can become a GODPARENT. Depending on how much you donate, you can symbolically support a child, a family or the whole village.

Kind: 10 Cent pro Tag/36,5 Euro jährlich
Familie: 20 Cent pro Tag/73 Euro jährlich
Dorf: 30 Cent pro Tag/109,50 Euro jährlich

Kind: 1 Euro pro Tag/365 Euro jährlich
Familie: 2 Euro pro Tag/730 Euro jährlich
Dorf: 3 Euro pro Tag/1095 Euro jährlich

LIVING
FRIENDSHIPS
AND GIVING
OPPORTUNITIES

FRIEND

GODPARENT

KOMMUNIKATION & FUNDRAISING

Kronhaldenweg 2, 6900 Bregenz
T +43 5574 4992-11, F +43 5574 4992-48
kinderdorf@voki.at



Vorarlberger
Kinderdorf
Wir tragen Sorge.

The Vorarlberg Children's Village is a child protection organisation committed to the welfare of children and young people, as well as their families – particularly in times of great stress. The principles enshrined in the United Nations Convention on the Rights of the Child guide our work.

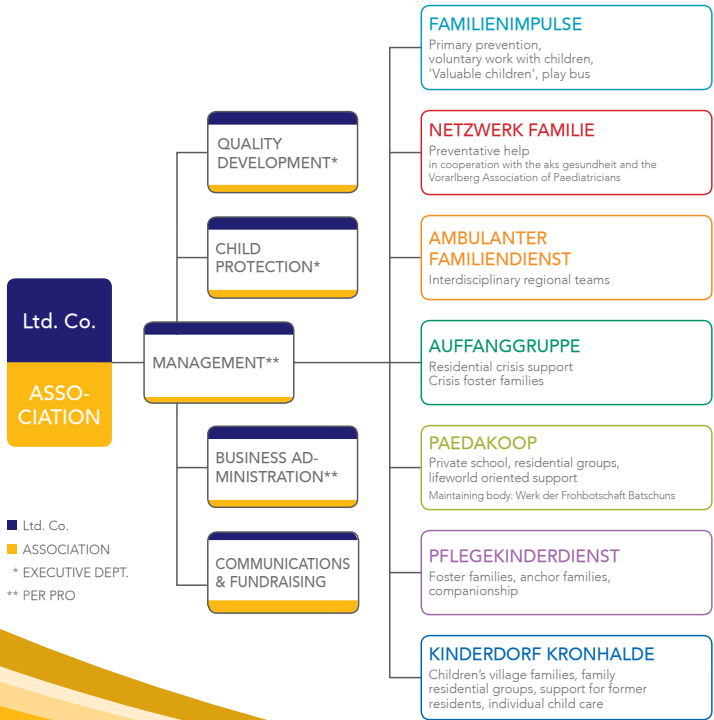
At the centre of our work are children and young people whose physical, mental, emotional and social development is impaired or endangered. Our support is oriented around the life situation of the families in need and securing the well-being of the children. In the sense of help becoming self-help, we promote the capabilities of the children, young people and their parents and strengthen them in taking personal responsibility by activating their social networks and exploiting the resources within the environment of the families.

OUR GUIDING
PRINCIPLE

PUTTING
PEOPLE FIRST



ORGANIZATION CHART



- Ltd. Co.
- ASSOCIATION
- * EXECUTIVE DEPT.
- ** PER PRO

VORARLBERGER KINDERDORF
Kronhaldenweg 2, 6900 Bregenz
T +43 5574 4992-0, F +43 5574 4992-48
kinderdorf@voki.at



Vorarlberger
Kinderdorf
Wir tragen Sorge.